

# COWES CLASSICS REGATTA

Incorporating the UK Dragon Classic Class Championship

4<sup>th</sup> to 7<sup>th</sup> June 2026

## SAILING INSTRUCTIONS

Run from Cowes, Isle of Wight.

The Organising Authority (OA) is the Royal London Yacht Club (RLYC) and Royal Thames Yacht Club (RTYC).

### 1. RULES

1.1 The event will be governed by the rules as defined in The Racing Rules of Sailing (RRS).

#### 1.2 For the British Dragon Association (BDA) Classic Championship ONLY:

1.2.1 The BDA Classic Championship is open to yachts of the International Dragon Class, of Wooden Carvel planked construction, constructed before 1972 that comply with the class rules and whose boat and helm are fully paid-up members of the Class Association

1.2.2 Class Measurement Certificates may be required to be produced.

1.2.3 International Dagon Class weighing and weight restrictions shall not apply.

1.2.4 The use of depth sounders is permitted.

1.2.5 The BDA Classic Trophy shall be awarded to the highest placed boat.

### 2. CHANGES TO SAILING INSTRUCTIONS

2.1 Any change to the sailing instructions will be posted before 0900 on the day it will take effect on the Official Notice Board (ONB), except that any changes to the schedule of races will be posted by 2000 on the day before they will take effect.

### 3. COMMUNICATION WITH COMPETITORS

3.1. Notices to competitors will be posted on the ONB. This is located online at [cowesclassicsregatta.org/racing/official-notice-board](https://cowesclassicsregatta.org/racing/official-notice-board). The race committee will use the event WhatsApp group to alert competitors when there has been a posting. The links to this group can be found at the end of these sailing instructions.

3.2. Competitor briefings will take place each morning before racing. The first briefing will take place at 1000 on Thursday 4<sup>th</sup> June in the London Room at the RLYC.

3.3. The event race office is located at the RLYC Clubhouse.

3.4. On the water, the race committee intends to monitor and communicate with competitors on the following VHF channels:

Course Area A – 06

Course Area B – 72

Course Area C – 08

3.5. The following communications may be made by the race committee on VHF radio: location of race committee vessel, alternate preparatory signals, courses, postponement, abandonment, starting signals and recalls.

3.6. [DP] From the first warning signal until the end of the last race of the day, except in an emergency or to retire, a boat shall not make voice or data transmissions and shall not receive voice or data communications that are not available to all boats.

#### 4. CODE OF CONDUCT

[DP] Competitors and support persons shall comply with reasonable requests from race officials.

#### 5. SIGNALS MADE ASHORE

5.1 Signals ashore for all course areas will be made from the RLYC flagpole. The race committees will use the various event WhatsApp groups to keep competitors informed whilst ashore.

5.2 Flag AP with two sounds signals means racing is postponed and boats are advised not to leave the harbour. The warning signal of the first class to start will be made not less than 45 minutes after the removal of AP ashore. This changes RRS Race Signals.

#### 6. SCHEDULE OF RACES

6.1 Planned number of races for each day:

<b>Class</b>	<b>Thursday 4<sup>th</sup> June No. of races</b>	<b>Friday 5<sup>th</sup> June No. of races</b>	<b>Saturday 6<sup>th</sup> June No. of races</b>	<b>Sunday 7<sup>th</sup> June No. of races</b>
<b>Class One Yachts</b> Classic and Spirit of Tradition yachts MORE than 13m LOA	2	3	3	2
<b>Class Two Yachts</b> Classic and Spirit of Tradition yachts LESS than 12.99m LOA	2	3	3	2
<b>XOD, Daring, Etchells</b>	Informal 2 races	3	3	2
<b>6m, Seaview Mermaid</b>	N/A	Informal 2 races	3	2
<b>Dragon, Flying Fifteen, Sonar</b>	N/A	2	3	2








6.2 The first warning signal on Thursday 4<sup>th</sup> and Friday 5<sup>th</sup> June for each course area will not be before 1155.

6.3 The time of the first warning signal for the following day's racing will be posted no later than 2000 on the ONB together with the scheduled number of races for each class.

6.4 The race committee can run a maximum of four races in one day and get up to one race ahead of schedule if weather conditions suggest the following day's racing may be affected.

## 7. CLASS FLAGS AND PROVISIONAL COURSE AREAS

### 7.1 Class flags and proposed race-course areas.

Class	Class Flag	Provisional Course Area
<b>Class One Yachts</b> Handicap Yachts over 13m LOA	NP1 	B
<b>Class Two Yachts</b> Handicap Yachts less than 12.99m LOA	NP2 	B
<b>Etchells</b>	Class logo on blue 	A
<b>Daring</b>	Class logo on white 	A
<b>Dragon</b>	Letter D on yellow 	A
<b>Seaview Mermaids</b>	Letter U on yellow 	C
<b>XOD</b>	IC Whiskey 	C

## 8. RACING AREAS AND COURSE AREA IDENTIFICATION

- 8.1 The location of the start line for each race-course area will be provided at the daily competitor briefings and notified on the race-course-specific WhatsApp group and repeated on VHF by 1030 each race day.
- 8.2 Each race committee vessel will display a flag designating its course area:  
Race-Course Area A - Gold flag with "RC-A"  
Race-Course Area B – Navy blue flag with "RC-B"  
Race-Course Area C – White flag with "RC- C"
- 9.1 The diagrams in Addendum A show the course options for the W/L course options, including the approximate angles between legs, the order in which marks are to be passed, and the side on which each mark is to be rounded.
- 9.2 No later than the warning signal, the race committee signal vessel will display the course to be sailed and the approximate compass bearing of the first leg.
- 9.3 The fixed marks to be used for "round the cans" racing are listed in Addendum B. For this format of racing the course to be sailed will be announced on the relevant course area VHF channel prior to the Orange Attention signal being displayed.
- 9.4 If either gate mark 4s or 4p is missing, boats shall round the remaining gate mark to port.

## 10 MARKS

10.1 The marks for each course area will be as follows:

COURSE AREA	MARKS TO BE USED	CHANGE MARKS	START MARK	FINISH MARK
	1,1A, 2S,2P	1, 1A		
<b>A</b>	Orange inflatables	Black inflatables	Yellow inflatable or RIB with orange flag	Yellow inflatable
<b>B</b>	Fixed marks or yellow inflatable	N/a	Orange inflatable	Dan buoy with blue flag
<b>C</b>	Navy blue inflatables	Red Inflatables	Orange inflatable or RIB with orange flag	Yellow inflatable or RIB with blue flag

## 11 THE START

- 11.1 Races will be started using RRS 26 with the warning signal made five minutes before the starting signal. It is the race committee's intention to use a Papa flag as the Preparatory signal for the first attempt to start each race.
- 11.2 To alert boats that a race will begin soon, an Orange Attention signal flag will be displayed with multiple sound signals not less than five minutes before a warning signal is displayed.
- 11.3 The starting line is between a staff displaying an orange flag on the committee vessel at the starboard-end and the course side of the port-end starting mark as specified in SI 10.1.
- 11.4 In addition to RRS 29.1, if any part of a boat's hull is on the course side of the starting line at her starting signal and she is identified, the race committee will attempt to hail her bow or sail number on VHF radio. Failure to hail her number, failure of her to hear such a hail, or the order in which boats are hailed will not be grounds for a redress request. This changes RRS 61.1 (a).
- 11.5 A boat that does not start within 10 minutes after her starting signal will be scored Did Not Start without a hearing. This changes RRS A5.1 and A5.2.

## 12 CHANGE OF THE COURSE

- 12.1 To change the next leg of the course, the race committee will either move the existing marks (for minor changes) or lay replacement marks 1 and 1a when the change is more significant. The colour of replacement marks (if used) for each race course area is listed in SI 10.1.
- 12.2 The race committee may change a leg of the course by up to ten (10) degrees in bearing and/or 100m in length without a signal. This changes RRS 33 and Race Signals.

## 13 THE FINISH

- 13.1 The finishing line is between a staff displaying a blue flag on the committee vessel and the course side of the finishing mark as stated in SI 10.1 or the staff on a rib displaying a blue flag.

## 14 OBSTRUCTIONS

- 14.1 The Moving Prohibited Zone (MPZ), as detailed by the Associated British Ports of Southampton – Notice to Mariners No 06 of 2026, is designated as an obstruction. More information can be found by following this link: <https://www.southamptonvts.co.uk/media/zsnxhue/sou-lntm-2026-005-precautionary-area-thorn-channel.pdf>

## 15 PENALTY SYSTEM

- 15.1 A boat may take a One-Turn Penalty when she may have broken a rule of Part 2 or rule 31 (touching a mark) in an incident while racing. This changes RRS 44.1.

- 15.2 In RRS 44.2 insert after the first sentence: "However, on a windward/leeward course, if Mark 1a (spreader mark) is set, a boat SHALL take a penalty for an incident in the zone around Mark 1 or on the leg between Mark 1 and Mark 1a, as soon as possible after leaving the zone around Mark 1a."

## **16 TARGET TIMES AND TIME LIMITS**

- 16.1 The target time for the first boat in each class for each race is 60-75 minutes. Failure to meet this time shall not be grounds for redress. This changes RRS 61.1 (a).
- 16.2 The time limit for each for race will be 120 minutes. If no boat has finished within the race time limit, the race will be abandoned. This shall not be grounds for redress. This changes 61.1 (a).
- 16.3 Finish Window for Handicap fleets - the time for boats to finish after the first boat sails the course and finishes is 30 minutes.
- 16.4 Single Fleet race classes: boats still racing more than 15 minutes after the first boat finishes shall be awarded the points for the place behind the last boat which has finished the race within the time limit. This changes RRS A5.

## **17 HEARING REQUESTS**

- 17.1 RRS Appendix T - Arbitration applies, however T.1 (b) is changed so that the penalty is reduced to 20%.
- 17.2 The protest time limit is 75 minutes after the last boat finishes the last race of the day or the race committee signals no more racing today, whichever is later. The time will be posted on the online ONB.
- 17.3 Hearing forms are available from the race office at the RLYC.
- 17.4 Notices will be posted no later than 30 minutes after the protest time limit to inform competitors of hearings in which they are parties or named as witnesses. All hearings will be held at the RLYC Clubhouse.

## **18 SCORING**

- 18.1 Two races are required to constitute a series for each class.
- 18.2 When fewer than four races have been completed, a boat's series score will be the total of her race scores.
- 18.3 When four or more races have been completed, a boat's series score will be the total of her race scores excluding her worst score.

## **19 SAFETY REGULATIONS**

- 19.1 [DP] A boat that retires from a race shall notify the race committee via VHF before leaving the course, or, when that is impossible, immediately after arrival ashore by contacting the race committee via the event WhatsApp Group.

## **20 EQUIPMENT AND MEASUREMENT CHECKS**

- 20.1 A boat or equipment may be inspected at any time for compliance with the class rules.

## **21 OFFICIAL VESSELS**

- 21.1 The Race Committee signal vessels will be:
- Course Area A: **Cowes United** – white catamaran, motor vessel
  - Course Area B: **Gemini Breeze** – navy blue hull with white topsides, open motor vessel
  - Course Area C: **Three Cs** – turquoise hull and white topsides, open motor vessel

## **22 SUPPORT PERSON VESSELS**

- 22.1 The race committee would like to call special attention to RRS 37 – providing assistance.
- 22.2 All support vessels shall carry a marine VHF radio capable of receiving and transmitting on all international channels.
- 22.3 [DP] All support vessels shall stay at least 100m outside the areas where boats are racing from the time of the first warning signal of the day until racing has concluded for the day.

## **23 TRASH DISPOSAL**

- Trash may be placed on official vessels.

## **24 BERTHING**

Berthing is the responsibility of each competing boat.

## **25 HAUL-OUT RESTRICTIONS**

25.3 All boats shall be afloat no later than 1000 the day of the first scheduled race.

25.4 Boats shall not be hauled out during the event except with and according to the terms of prior written permission of the race committee.

## **26 DIVING EQUIPMENT AND PLASTIC POOLS**

26.3 No person shall swim or undertake any underwater or diving activities of any kind within Cowes Harbour without permission and/or a permit from the Cowes Harbour Master or the authorised marina manager. See: Cowes Harbour Commission General Direction 4.4 and 4.5.

26.4 Underwater breathing apparatus and plastic pools or their equivalent shall not be used around competing boats from 2000 on the day before the first scheduled race until the end of the event.

26.5 Competing boats shall not be cleaned more than 10cm below the waterline by any means from the preparatory signal of the first race until the end of the event.

## **27 PRIZES**

27.1 Prizes will be awarded as soon as possible after racing on Sunday 7<sup>th</sup> June 2026 at RLYC to the 1<sup>st</sup>, 2<sup>nd</sup> and 3<sup>rd</sup> boat in each class. In addition, prizes may be awarded on a daily basis to each class winner with all races sailed that day to be scored with no discards.

27.2 The 1792 Cup will be awarded to the overall winner.

27.3 The number of races to count for the 1792 Cup, Cowes Classics New Helm Trophy and David Gower Bowl is six. In the event that fewer than six races, after discard, are sailed by a class, the total score of each boat in that class will be pro-rated to the equivalent of 6 races.

27.4 To calculate the overall winner, the points scored by each boat shall be multiplied by 10 and then divided by the square root of the number of boats in the class entered in the regatta, to recognise the added difficulty of winning in a large fleet. The winner will be the boat with the fewest points.

## **28 RISK STATEMENT**

RRS 3 states: "The responsibility for a boat's decision to participate in a race or to continue racing is hers alone." Sailing is by its nature an unpredictable sport and therefore inherently involves an element of risk. By taking part in the event, each competitor agrees and acknowledges that:

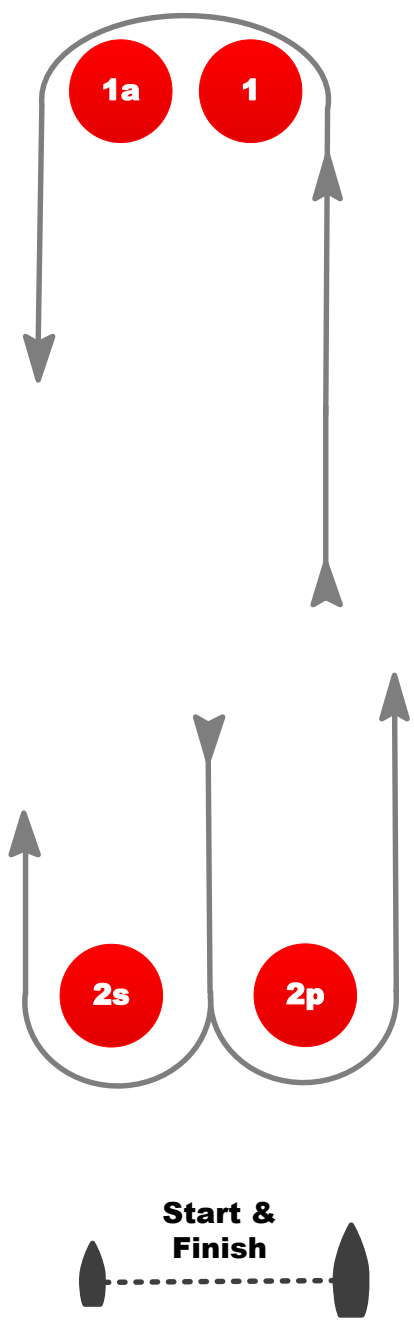
- a. They are aware of the inherent element of risk involved in the sport and accept responsibility for the exposure of themselves, their crew and their boat to such inherent risk whilst taking part in the event.
- b. They are responsible for the safety of themselves, their crew, their boat, and their other property whether afloat or ashore.
- c. They accept responsibility for any injury, damage or loss to the extent caused by their own actions or omissions.
- d. Their boat is in good order, equipped to sail in the event and they are fit to participate.
- e. The provision of a race management team, patrol boats and other officials and volunteers by the event organiser does not relieve them of their own responsibilities.
- f. The provision of patrol boat cover is limited to such assistance, particularly in extreme weather conditions, as can be practically provided in the circumstances.
- g. It is their responsibility to familiarise themselves with any risks specific to this venue or this event drawn to their attention in any rules and information produced for the venue or event and to attend any safety briefing held for the event.

## **29 INSURANCE**

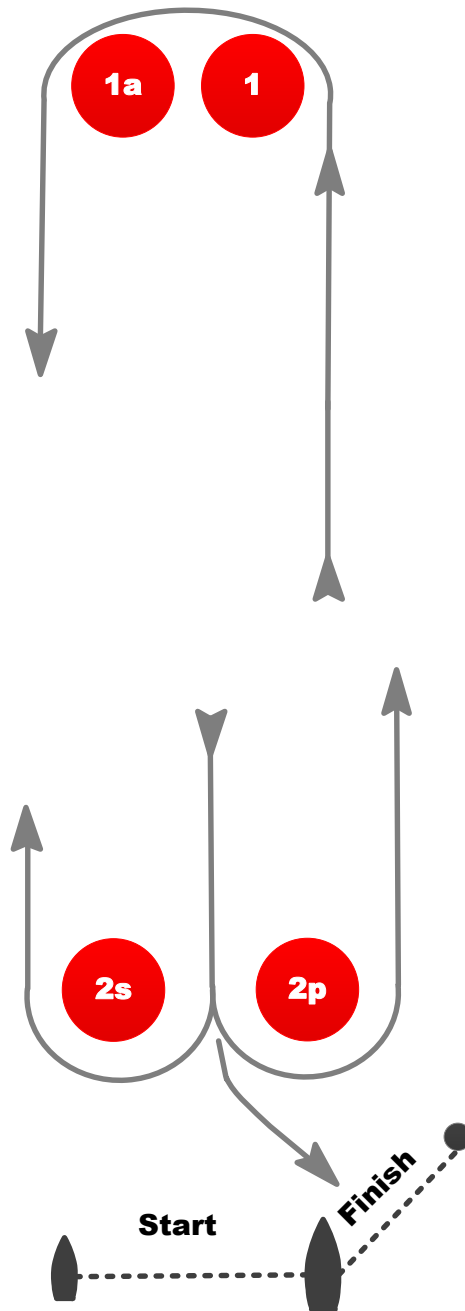
Each participating boat shall be insured with valid third-party liability insurance with a minimum cover of £3,000,000 per incident or the equivalent.

**# # # END # # #**

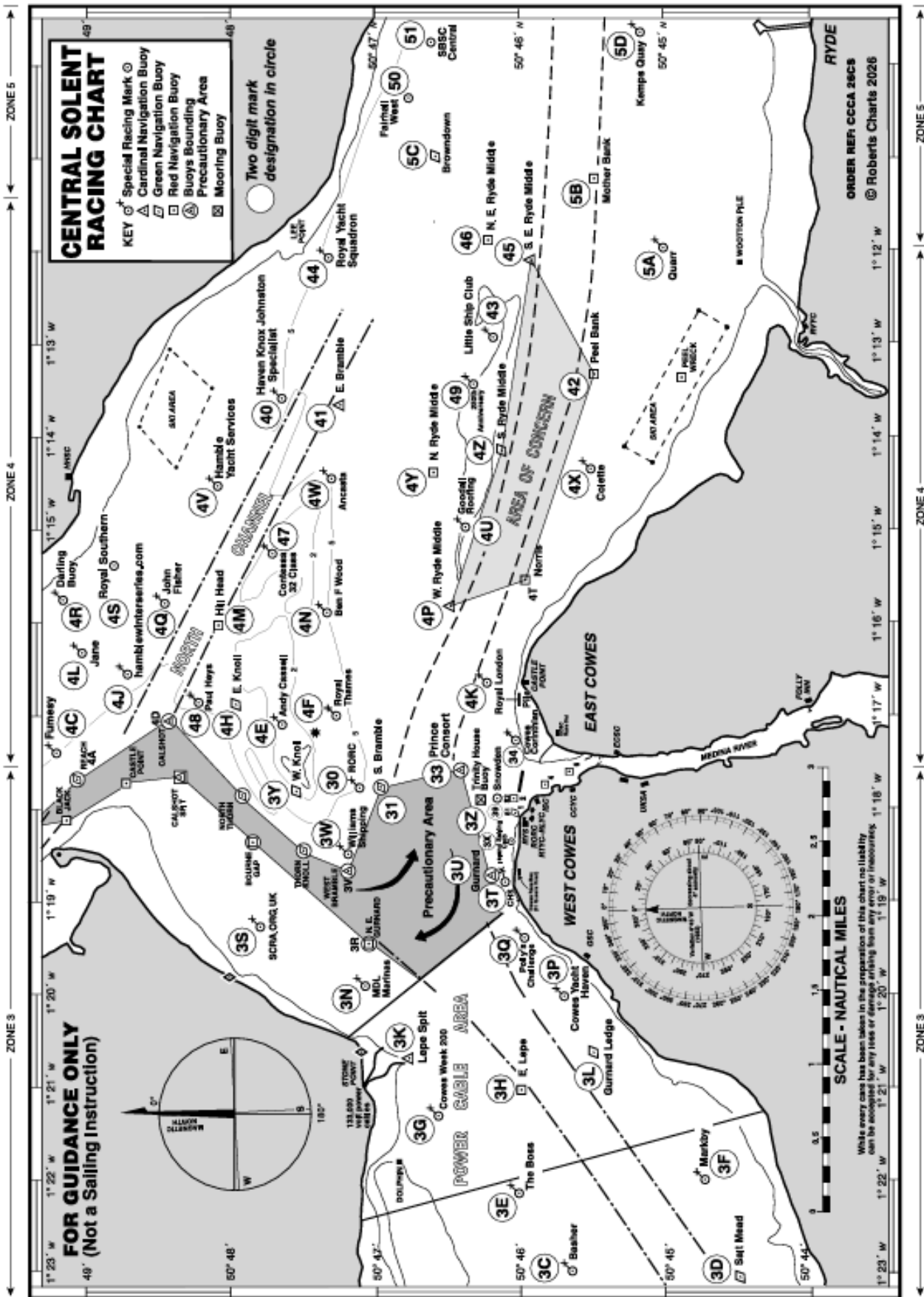
<b>LA</b>	<b>COURSE: WINDWARD / LEEWARD with spreader mark</b>
<b>Signal</b>	<b>Mark Rounding Order</b>
<b>LA2</b>	<b>Start – 1 – 1a – 2s/2p – 1 – 1a – Finish</b>
<b>LA3</b>	<b>Start – 1 – 1a – 2s/2p – 1 – 1a – 2s/2p – 1 – 1a – Finish</b>
<b>LA4</b>	<b>Start – 1 – 1a – 2s/2p – 1 – 1a – 2s/2p – 1 – 1a – 2s/2p – 1 – 1a – Finish</b>



<b>LRA</b>	<b>COURSE: WINDWARD / LEEWARD with spreader mark and reaching finish</b>
<b>Signal</b>	<b>Mark Rounding Order</b>
<b>LRA2</b>	<b>Start – 1 – 1a – 2s/2p – 1 – 1a – 2p – Finish</b>
<b>LRA3</b>	<b>Start – 1 – 1a – 2s/2p – 1 – 1a – 2s/2p – 1 – 1a – 2p – Finish</b>
<b>LRA4</b>	<b>Start – 1 – 1a – 2s/2p – 1 – 1a – 2s/2p – 1 – 1a – 2s/2p – 1 – 1a – 2p – Finish</b>



ADDENDUM B – FIXED MARKS SOLENT AREA



## ADDENDUM C – EVENT WHATSAPP GROUPS

Area	Course Area A	Course Area B	Course Area C
WA Group Name	Competitors A : CCR	Competitors B : CCR	Competitors C : CCR
WA Group Link	<a href="https://chat.whatsapp.com/BvI8Jlgf0CPEijtqRpjYzL2">https://chat.whatsapp.com/BvI8Jlgf0CPEijtqRpjYzL2</a>	<a href="https://chat.whatsapp.com/HEhr1ljFE5WDFwDoq41d4D">https://chat.whatsapp.com/HEhr1ljFE5WDFwDoq41d4D</a>	<a href="https://chat.whatsapp.com/DQ4m6d5RGVOLZ4WPAH77Gq">https://chat.whatsapp.com/DQ4m6d5RGVOLZ4WPAH77Gq</a>
QR Code			

## ADDENDUM D – USEFUL CONTACT INFORMATION

Useful Numbers	VHF	Telephone
<b>Regatta Office at RLYC</b>		07542 386 377
Royal London Yacht Club – Club Office		01983 299 727
Cowes Classics Launch Service: ‘London Dock’	<b>37A</b>	07984 656 571
Cowes Harbour Master	<b>69</b>	01983 293 952
Cowes Medical Centre, Newport Road, Cowes		01983 295 251
St Mary’s Hospital, Newport, A&E		01983 822 099
<b>Regatta Chairman:</b> Peter Ralls		Contact through the Club
<b>Regatta Secretary:</b> Anna Howie		07542 386 377
<b>Principal Race Officer:</b> Tim Hancock		07983 873 232
<b>Course Area A Race Officer:</b> Peter Taylor	<b>06</b>	07900 583 792
<b>Course Area B Race Officer:</b> Phil Hagen	<b>72</b>	07785 253 250
<b>Course Area C Race Officer:</b> Tim Hancock	<b>08</b>	07983 873 232
<b>Emergency contacts</b>		
<b>Solent Coastguard</b>	<b>16</b>	
<b>National Coastwatch</b>	<b>65</b>	

### Launches

Launch service will be available from 0900-1800 each day, or until racing has finished (if later). Launches will run from/to Trinity Landing (opposite the RLYC) before and after racing. Call all launches on VHF 37A, call-sign “London Dock,” or phone 07984 656 571.

### Royal London YC & Royal Thames YC Shoreside

All participating sailors will become Temporary Members of the club from Thursday 4 June to Sunday 7 June inclusive. Participating sailors and their immediate families are invited into the clubhouse each day.